

ISEDIO

ARMOURJOINT-LITE FIXED

Technical Datasheet

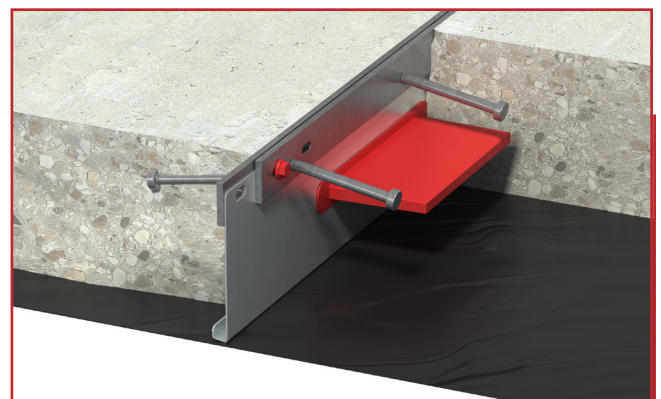
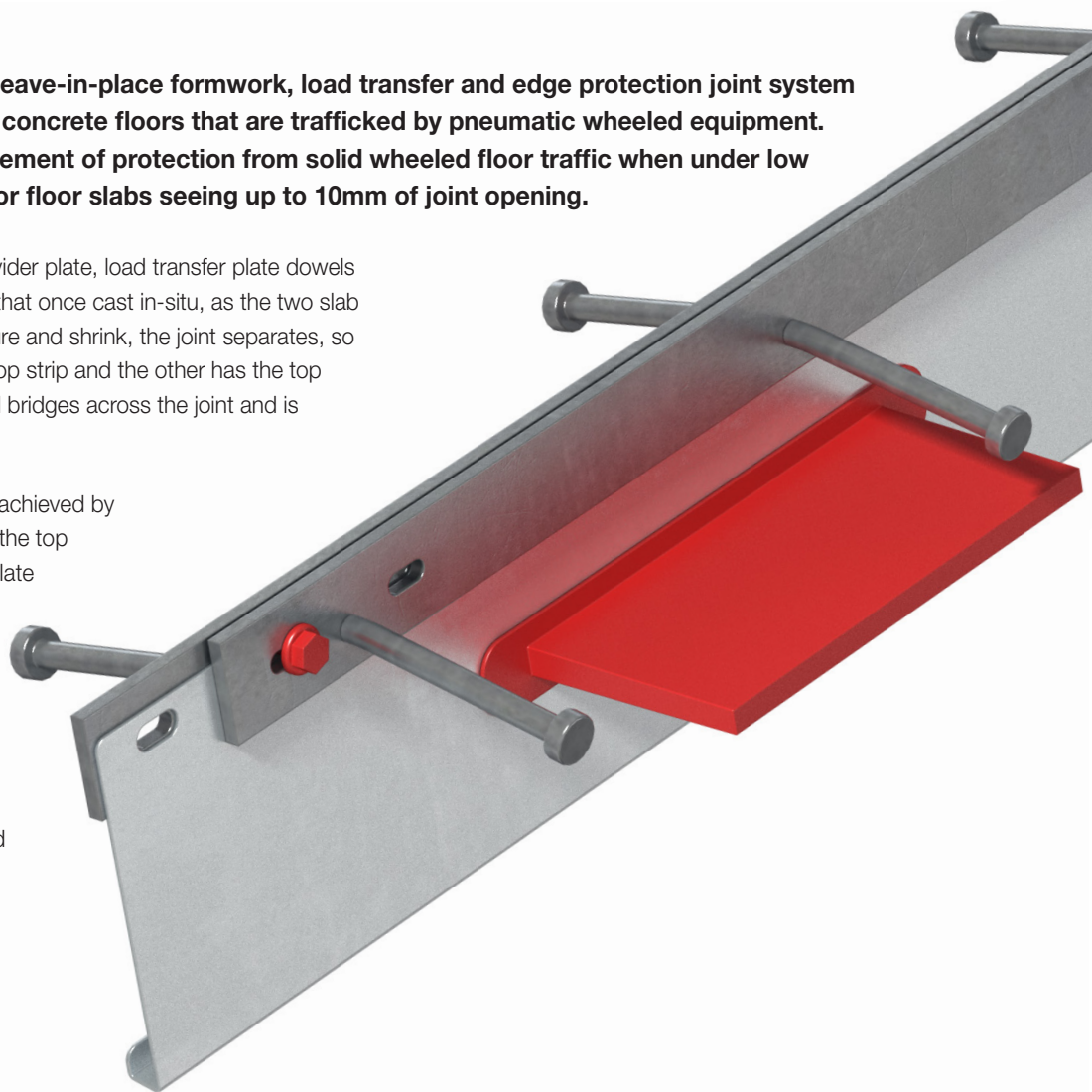
Isedio ARMOURJOINT-LITE is a leave-in-place formwork, load transfer and edge protection joint system designed for light duty industrial concrete floors that are trafficked by pneumatic wheeled equipment. ARMOURJOINT-LITE offers an element of protection from solid wheeled floor traffic when under low load and low traffic conditions, for floor slabs seeing up to 10mm of joint opening.

The joint system comprises of a fixed divider plate, load transfer plate dowels and sleeves. The joint is designed such that once cast in-situ, as the two slab panels either side of the joint begin to cure and shrink, the joint separates, so that one slab panel has the sleeve and top strip and the other has the top strip, divider plate and dowel. The dowel bridges across the joint and is embedded in both slab panels.

Formwork for casting a concrete slab is achieved by the vertical divider plate which supports the top strip edge protection and load transfer plate dowels.

Slab arris protection is provided by cold drawn mild steel 6mm thick top strips with shear studs that anchor the top strips in the concrete.

Load transfer across the joint is achieved by (asymmetric) plate dowels and sleeves. The plate dowels are attached to the vertical divider plate and the sleeves are held in place under friction and are detachable as the joint opens up. Intersections for corners, tees and 4 ways are available. Please note, for heavier duty floors with frequent traffic and larger joint openings, a suitable alternative Isedio product should be used such as ARMOURJOINT, GUARDJOINT or SHIELDJOINT.



MATERIAL SPECIFICATION

Component	Material
Top Strips	Cold drawn steel to BS EN 10277-2:2008 (can be supplied in stainless steel or hot dip galvanised)
Frangible Fastener	Nylon
Divider Plate	Steel DC01 to BS EN 10130:2006D
Load Transfer Dowel Plate	6mm - S275 Steel to BS EN 10025-2:2004
Sleeve	6mm - PP

TECHNICAL DATA

Description	Dimensions & Tolerances
Joint Length	3,000mm +/- 2.0mm
Straightness	+/- 0.5mm in 600mm
General Dimensional Tolerances	Dimensions < 12mm +/- 0.5mm Dimensions < 12mm +/- 2.0mm

Information on load transfer capacities can be found in the Load Transfer Capacity Datasheet.

PACKAGING INFORMATION

5 x 6mm Dowels (600mm centres)			
Joint (mm)	Quantity and metres of joint per bundle	Approx. bundle weight inc. packaging (kg)	Max. no. of bundles and metres per truck
130mm	49 off - 147m	1,305 kg	16 bundles - 2,352m
140mm	49 off - 147m	1,323 kg	16 bundles - 2,352m
150mm	49 off - 147m	1,340 kg	16 bundles - 2,352m
160mm	42 off - 126m	1,184 kg	16 bundles - 2,016m
170mm	42 off - 126m	1,199 kg	16 bundles - 2,016m
180mm	42 off - 126m	1,213 kg	16 bundles - 2,016m
190mm	42 off - 126m	1,228 kg	16 bundles - 2,016m

Isedio ARMOURJOINT-LITE is available in sizes less than 130mm and greater than 190mm, details available upon request.

Copyright © Leviat Limited. Errors and omissions excepted. We reserve the right to revise this documentation and to make changes in content from time to time without obligation on the part of Leviat Limited to provide notification of such revision or change. Information contained within this document is approximate.